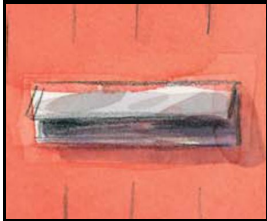


Consigne : Reconstitue la première de couverture de l'album "La Clé" (de Isabelle Flas et Annick Masson) en collant les étiquettes que tu as découpées.

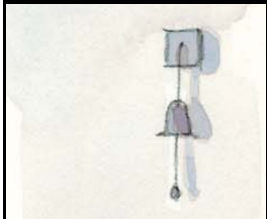




clé



Annick Masson



La



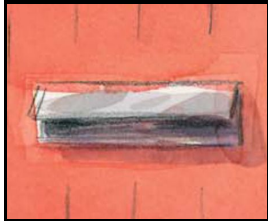
Isabelle Flas



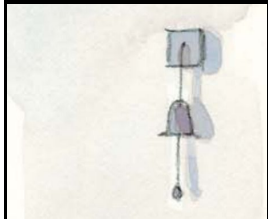
Mijade



clé



Annick Masson



La



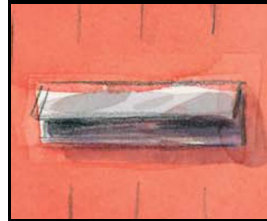
Isabelle Flas



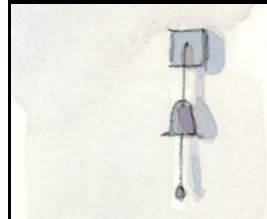
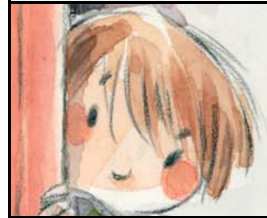
Mijade



clé



Annick Masson



La



Isabelle Flas



Mijade